



Team Fantail

Term Four 2019 Newsletter

*E tu kahikatea, hei wakapae ururoa,
Awhi mai, awhi atu, tatoes, tatoes e*
Kahikatea stand together; their roots intertwine,
strengthening each other.
We all help one another and together we will be
strong.

Tena koutou katoa, Hello Everyone
The Team Fantail teachers would like to welcome you back for Term 4. A special welcome to the new families joining us this term.

Teaching and Learning

In Team Fantail we take a collaborative approach to teaching and learning. Much like in an early childhood setting, your child will benefit from the strengths and talents of several teachers who will work together to plan and deliver an engaging programme for your children. Your child will also join with their whanau group and teacher for parts of the day.

At Windy Ridge School we embrace the importance and value of play. Play is vital for developing relationships, resilience, problem solving and perseverance. Your child will have time in their day to collaborate, innovate, spend time outside, and follow their own interests for sustained periods of time..

Guided, teacher-led literacy and numeracy lessons also take place as part of our day.

Our Doors are Open

We value parents as a child's first teacher and encourage you to spend time in our environment whenever you can. We encourage you to stay and play for as long as you are able to in the mornings. Please also let us know what strengths and talents you have that you could share with the Fantail learners! Crafts, skills, languages, cooking, reading aloud, building, or even keeping up our playdough supply! You are always welcome.



Arrival in the Morning

While school begins at 8:55am we encourage you to arrive around 8:30am or shortly after. This will allow children to unpack their bag, catch up with their friends and have a short play on the playground without feeling hurried.

Please do not arrive before 8:30am. Teachers use the time to organise learning resources for the day. We appreciate your cooperation.

Please note that on **Friday mornings**, all Windy Ridge teachers are in a meeting. These can run past 8:30am, so please be mindful when planning your drop off routine for your child on that day, as some teachers may not be in class from 8:30am.

End of the Day

At the end of the day there are often important messages and many things to organise. **Please help your child to focus by waiting for them away from the doors and windows of the classroom.** Your child will be dismissed at 3pm when their whanau teacher sees an adult or older sibling has arrived to collect them.

Late Arrival/Early Pick-ups

If your child has arrived after 8:55am please report to the office to collect a **yellow card**.

If you are picking your child up before 3:00pm, please report to the office before collecting your child. You will be given an **orange slip** to confirm you are taking your child early.

Growing Independence

We encourage children at school to take responsibility for their personal items. Please help your child to develop these skills by giving them ownership of organising their belongings for each school day.

Please ensure all of your child's items are named, especially clothing that may be removed throughout the day.



Parent Information

Please spend time browsing our Parent Walls in Rooms One and Three where we share information about the learning that takes place in Fantail Team.

School Assemblies

Windy Ridge runs school wide assemblies each fortnight on a Friday morning. These include opportunities for the children to share their learning and celebrate their successes. All whanau are welcome to attend these assemblies which begin at 9:45am in the school hall.

Clothing and Weather

We ask that your child has at least one full spare change of clothes, including underwear, in their bag. We like to allow play in all weathers and in order to do so children need rainproof outer garments and gumboots. **Sun hats are compulsory in Term 4.**

Lunchboxes and Drink bottles

Every day, your child needs a **named** lunch box filled with healthy goodies that are easy to open, and a **named** bottle of water. Please include enough for morning tea and lunch.

We aim to keep Windy Ridge a beautiful place and ask that you send a 'waste free' lunch to school, free of packaging. Lunch box rubbish will remain in the lunch boxes and return home.

Morning tea can seem a long way off for some! We have Kickstart Breakfast in the hall from 8:30 - 8:55 every morning, all children are welcome. We also have a Fantail fruit basket in Room 2, which children are able to help themselves to during the morning. Contributions to the fruit basket are much appreciated!

Communication

Please feel free to contact us if there is a question or situation you would like to discuss. Open lines of communication between the parent, learner and teachers are vital in promoting a positive learning experience for everyone. **Your child's Whanau teacher will always be the first port of call.** If a matter requires more time we recommend an appointment.

There is a Windy Ridge parent Facebook page that we encourage you to join. This page is great for networking and sharing. However, if you have any organisational questions it's best to contact the office or teachers directly. We also have an App which you can access through **Skool Loop**.

Values and NZ Key Competencies

Windy Ridge School promotes Positive Behaviour for Learning (PB4L). We use these values to guide the behaviour of our students throughout the day. Our main focus for learning with children in their first year of school is our National Curriculum's Key Competencies which is embedded throughout our daily programme.

Our Windy Ridge Values	NZ Curriculum Key Competencies
<ul style="list-style-type: none"> • Respect • Kindness • Integrity • Resilience 	<ul style="list-style-type: none"> • Thinking • Using language symbols and text • Managing self • Relating to others • Participating and contribution

Through our play based environment, we help children to learn the key competencies by talking about strategies to

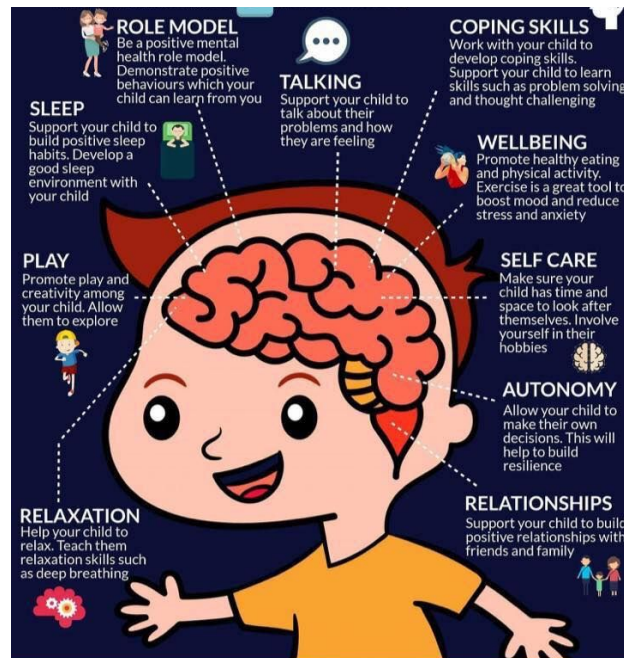
- Use their words to share their feelings and needs
- Calm themselves when emotions are running high
- Create and maintain friendships
- Build resilience and perseverance
- Develop strategies to deal with a range of emotions
- Independently manage themselves and their belongings
- Develop their own problem solving skills
- Show a sustained interest in a project

Seesaw

Your child will have their own individual Seesaw journal which you can access via smartphone or computer. Students and teachers use this platform to share pictures and Learning Stories with you. Parents and whanau have the opportunity to see their children's work and leave comments and encouragement.

You can expect to see photos, learning stories and notices/reminders.

For suggestions of how you can help your child at home, please refer to the ideas below



Numeracy and Literacy

At school, your children will be involved in guided Literacy and Maths groups as well as exploring these concepts through play.

Literacy

After a term or more participating in our pre-literacy programme *and* when your child begins to show readiness for formal Literacy instruction, they will start bringing home a small reader.

You are invited to have your child read the readers to you, read them to your child or take turns in order to reinforce their learning from the day.

Your child will bring home one reader on Monday or Tuesday then another on Thursday or Friday, two per week.

The best way to support literacy learning is to talk to and read to your child.

Numeracy

Some of the ways you can include numeracy at home include

- Finding numbers around your house and neighbourhood
- Counting forwards and backwards starting with different numbers
- Playing board and dice games together like Snakes and Ladders
- Talking about shapes you can see in the environment around you
- Measuring and counting in authentic contexts such as cooking, sharing out items and using money

Loose Parts

We welcome clean, empty containers, egg cartons, boxes, cardboard rolls etc for creative construction in our making area.

We also love to receive interesting items for use in imaginative, open ended play, for example, pipes, buttons, wood, shells, rocks, beads, bottle tops...

Term Events:

Labour Day, school closed: Monday 28 October
 Class and individual photos: Monday 4th November
 Windy Ridge Athletics Day: Monday 18th November
 End of Term: Wednesday 18 December 12:30pm

Your Fantail Teachers

Room 1: Katie Ford Kford@windyridge.school.nz
 Room 2: Nicola Tyler ntyler@windyridge.school.nz
 Room 3: Gabrielle Shin gshin@windyridge.school.nz
 Room 4: Sarah Huppler shuppler@windyridge.school.nz

Fridays in Room 2: Ms Rosie Cook

Tuesdays in Room 3: Mrs Moira Bryant

Wednesdays in Room 4: Mrs Jacqui Lindsay